

# lodge

AT THE HILLS

QUEENSTOWN | NEW ZEALAND









## Queenstown, New Zealand

Queenstown is a four-season resort nestled at the base of the magnificent Southern Alps Mountain Range. It is situated on the shores of Lake Wakatipu, surrounded by towering mountains and meandering rivers. This truly international resort offers a diverse range of outdoor activities, unique experiences and fine dining. Lodge at The Hills is situated 20 minutes from the centre of Queenstown and 5 minutes from beautiful, historic Arrowtown.









lodge  
AT THE HILLS

## The Lodge Experience

Lodge at The Hills is an 'exclusive use' hosted lodge, offering a bespoke experience for up to 12 guests. Set in 500 acres of tranquil ambience, in a stunning glacial valley and surrounded by snow-capped mountains, a stay at The Lodge is guaranteed to be a holiday of lasting special memories.

The Lodge owners allowed the architects freedom of expression in their design and they have ably met the brief to break all boundaries of preconceived ideas and build a lodge to a standard rarely achieved anywhere in the world.

From the moment guests walk into the grand entrance they are connected with the surrounding vistas. They are enveloped in the warmth, space, design and sense of home this unique lodge provides. Lodge at The Hills is a Queenstown haven where guests are free to unwind, relax and indulge in experiences not normally accessible. It is an opportunity to meet our people, soak up the rich art and culture, breathtaking scenery and be totally pampered by our attentive team.

## Guest at the Lodge will enjoy....

- Champagne & canapés on arrival
- Meet & greet by the Lodge team
- Daily Private Chef
- Daily Lodge Host
- Daily servicing
- Night Porter
- Breakfast, lunch, afternoon tea & dinner
- A selection of New Zealand wines & craft beers
- Cellar selection available on request
- In-room amenities
- On call concierge service
- Use of on property golf cart
- Access to The Hills Clubhouse & gym\*
- Private par 3 golf hole

*\*There may be times when the Clubhouse is closed due to a private function, access is therefore subject to availability.*









17th – The Hills signature hole

## The Golf Experience

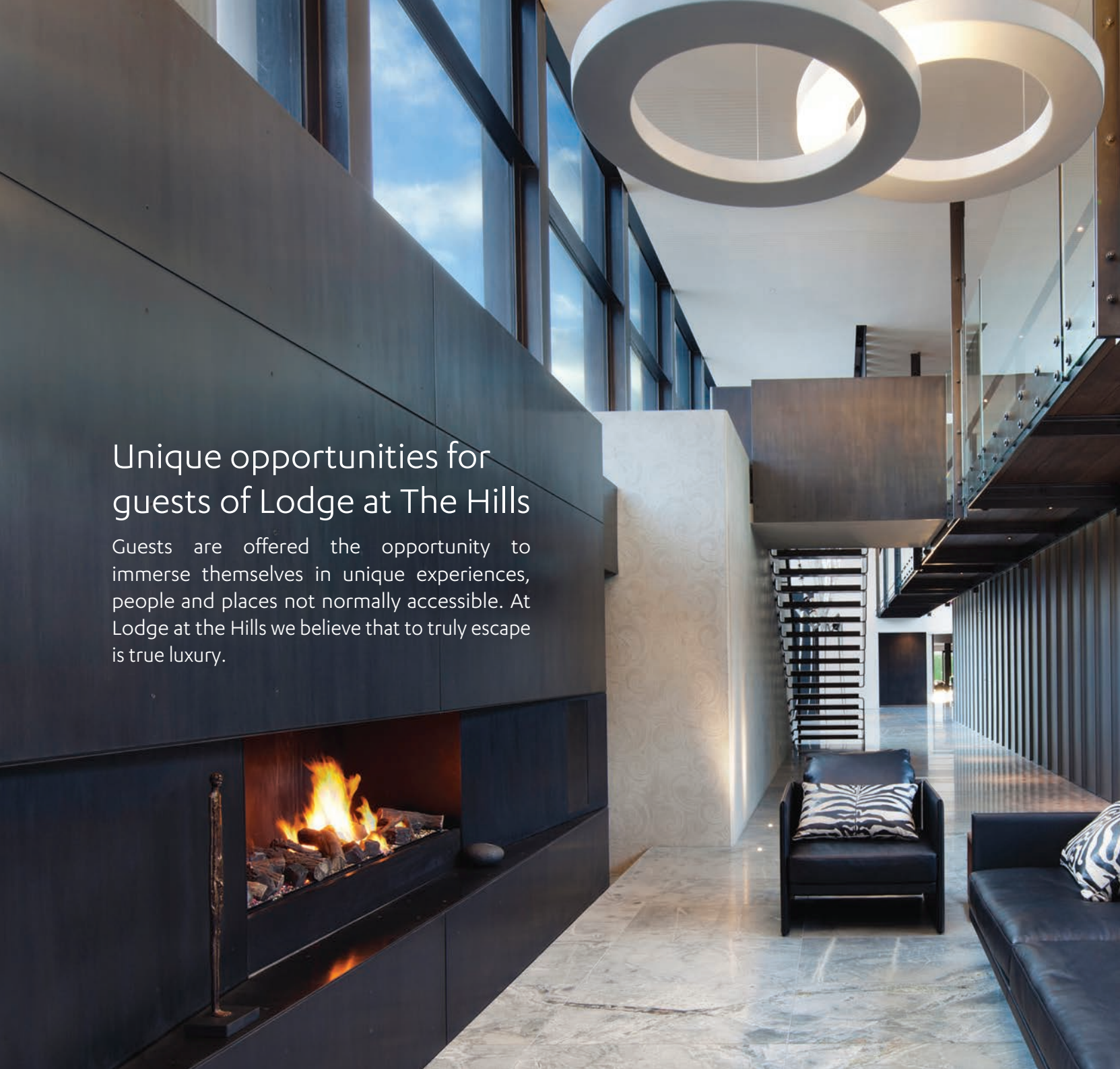
Lodge at The Hills is located on The Hills private golf course, home to the New Zealand Open – a cornerstone event on the PGA Tour of Australasia.

Measuring over 7000 yards, its thoughtful design provides a challenging and rewarding experience for golfers of all abilities. Each hole uniquely highlights the dramatic elevations of the area with no parallel fairways.

The private course offers exclusivity with less than 200 members. There is no need to be tied to booked tee times, or indeed, order of holes played!

Guests at Lodge at The Hills have the opportunity to play at The Hills. Bookings can be made at The Hills Clubhouse.

There is also a private par 3 hole adjacent to The Lodge for the exclusive use of lodge guests.

A modern, minimalist interior space with a dark, textured wall on the left featuring a built-in fireplace with a fire. The floor is made of large, light-colored stone tiles. On the right, there is a black leather armchair and a matching sofa, both with zebra-print pillows. In the background, a staircase with a glass railing leads to an upper level. The ceiling is white with large, circular, recessed light fixtures. Large windows on the left side of the wall offer a view of the outdoors.

## Unique opportunities for guests of Lodge at The Hills

Guests are offered the opportunity to immerse themselves in unique experiences, people and places not normally accessible. At Lodge at the Hills we believe that to truly escape is true luxury.





Lodge at The Hills is perfectly positioned to take advantage of what our region has to offer. Your lodge concierge is available to arrange bespoke experiences before and during your stay with us. From pure and pristine World Heritage National Parks to award winning wineries and a thriving and creative food scene, the South Island of New Zealand offers the opportunity to create your own unique 'bucket list'.

Examples of activities within reach of the lodge are: Glacier and mountain landings, skiing the Tasman Glacier, numerous 'Great Walks' such as the Milford and Routebourn tracks and private property guided walks; day or overnight trips to remote huts, backcountry stations and unspoilt forests; guided fly fishing in secret locations; Milford and Doubtful Sound experiences including catching and cooking lobster, cod or abalone; scenic flights and landings to areas only accessible from the air; ice driving, race track time trials or self drive jet boat sprinting; one on one with the wine makers and vertical tastings at local wineries such as Akarua, Amisfield, Carrick and Felton Road; private master class with talented and award winning chefs at the lodge or in restaurants; turn your stay into a yoga and health retreat experience with expert instructors and motivators, tailored nutrition and activities....

The potential is enormous and the list is endless – from adrenalin charged track racing and heliskiing to yoga poses and watercolour painting lessons – it is all here!

Lodge at The Hills partners with other exclusive use villas and lodges in New Zealand to provide complete New Zealand experiences if required.

\*additional charges apply for activities





Guest dining options include dining in the expansive dining room accessed through the underground wine cellar - an experience unrivalled anywhere in the world.





## The Food & Wine Experience

The lodge has its own private chef – dining is gourmet but informal! The cuisine is inspired by locally sourced seasonal food and wine. The flexibility of Chef's service ensures living in the lodge is an experience in itself. Guests may spend time with the Chef in the kitchen, enjoying a glass of wine while he cooks and may participate in a master class or two!! Breakfast, lunch, dinner, afternoon tea and canapés are included in the guest tariff. Guests may wish to have lunch prepared as a picnic, or dinner left for them to assemble and serve at their leisure. Alternatively, guests may choose to self cater. A complimentary selection of wine and beverages are provided or guests may choose to purchase from the thoughtfully curated 'Hills' Cellar Selection Menu'.



TOP LEFT: The gold bar and den. TOP RIGHT: Dining area where guests enjoy meals prepared by the lodge's private chef. Artwork by Cristina Popovici and New Zealand artists Don Binney and Charles Goldie. BOTTOM: The Lodge's kitchen is a perfect place for informal dining and to enjoy watching chef work his magic!



# The Architectural Experience

Lodge at The Hills was designed by Crosson Clarke Carnachan Chin Architects. Together with the Hill family, they have created an abode unlike any other in the South Pacific; outstanding in its seamless style, innovative flair and creative design.







From grand entrances and voids to the intimate nooks, incredible music room and private sitting rooms in the suites, Lodge at The Hills is an architectural masterpiece. It marries intimacy with scale, ensuring the Lodge fits into the landscape but provides luxurious living both indoors and out.

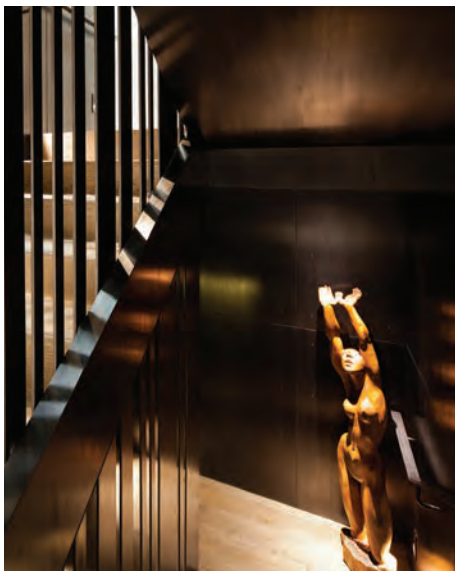
The use of unique building materials such as natural zinc internal and external panels, iron pasted corton steel panels and chimneys which form a surreal black patina are stunning architectural features. This is complimented by expansive landscaping featuring waves of flowers, wild grasses, trees and lighting. It has extensive private walkways, sculptures, grass tennis court, petanque court and a hedge maize. Guests can dine under flowering cherry trees, or snuggle in front of the fire pit in an enclosed seating area. The heated swimming pool has water crashing from level to level. A corton steel box houses the sauna, shower and changing room.

TOP LEFT: Feature entrance designed by Mark Hill. TOP RIGHT: Media room with custom-made oversized speakers. BOTTOM LEFT: Office/ study. BOTTOM RIGHT: Infinity pool.









Each of the six bedroom suites is individual in its design and luxurious furnishings. The suites have their own sitting areas (five with a gas fire), en-suite with soak tub and picture perfect views.







## The Art & Sculpture Experience

The Lodge boasts a stunning collection of paintings and sculpture curated by Sir Michael and Lady Christine for their own and their guests' enjoyment. There is also the world renowned private sculpture park as part of The Hills golf course with works by New Zealand and international artists. Included in the Sculpture Park is the 2012 installation *The Wolves are Coming* by Chinese artist Liu Ruowang. A herd of stunning cast iron horses *The Frolic and the Fancy* by English-born artist Max Patte was added in 2013. Guests of Lodge at The Hills are invited to enjoy the Sculpture Park at their leisure.





The Lodge hosts an extensive private collection of early New Zealand Maori Art, contemporary New Zealand Art and Asian contemporary art and sculpture.





*THE CALICI SCYTHE* PAUL DIBBLE



*KELP* MARK HILL



*YELLOW CONSTRUCTION* GRAHAM SNOWDEN



*RED RIDGE* KON DIMOPOULOS









## The Hills Clubhouse

The Hills award winning Clubhouse is also an architectural statement. It was designed by New Zealand architect Andrew Patterson, who exceeded in meeting the brief of a building that needed to be “totally in harmony with the landscape, with a presence of religious proportions that would stop people in their tracks, polished off by functioning flawlessly”. The Clubhouse won the New Zealand Institute of Architects Supreme Award in 2008 and was also a finalist in the World Architecture Festival in the same year. Guests of Lodge at The Hills are free to use the clubhouse facilities at any time during their stay\*.

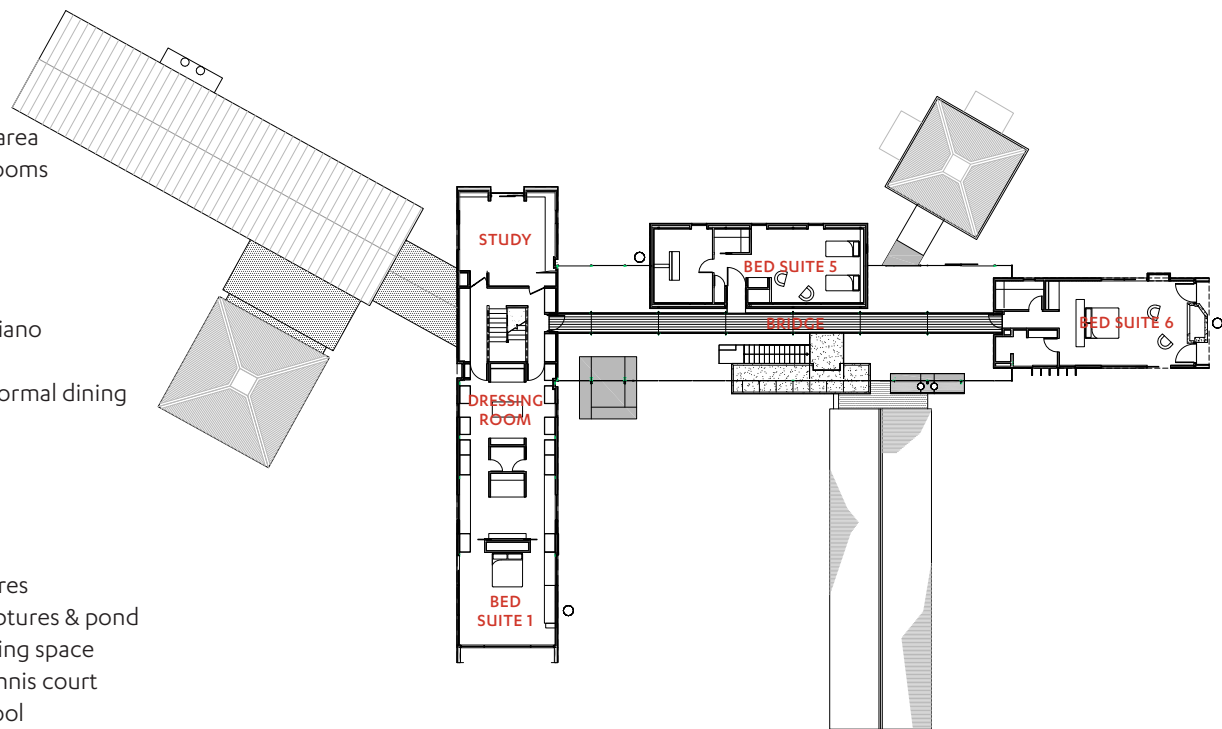
*\*There may be times when the Clubhouse is closed due to a private function, access is therefore subject to availability.*



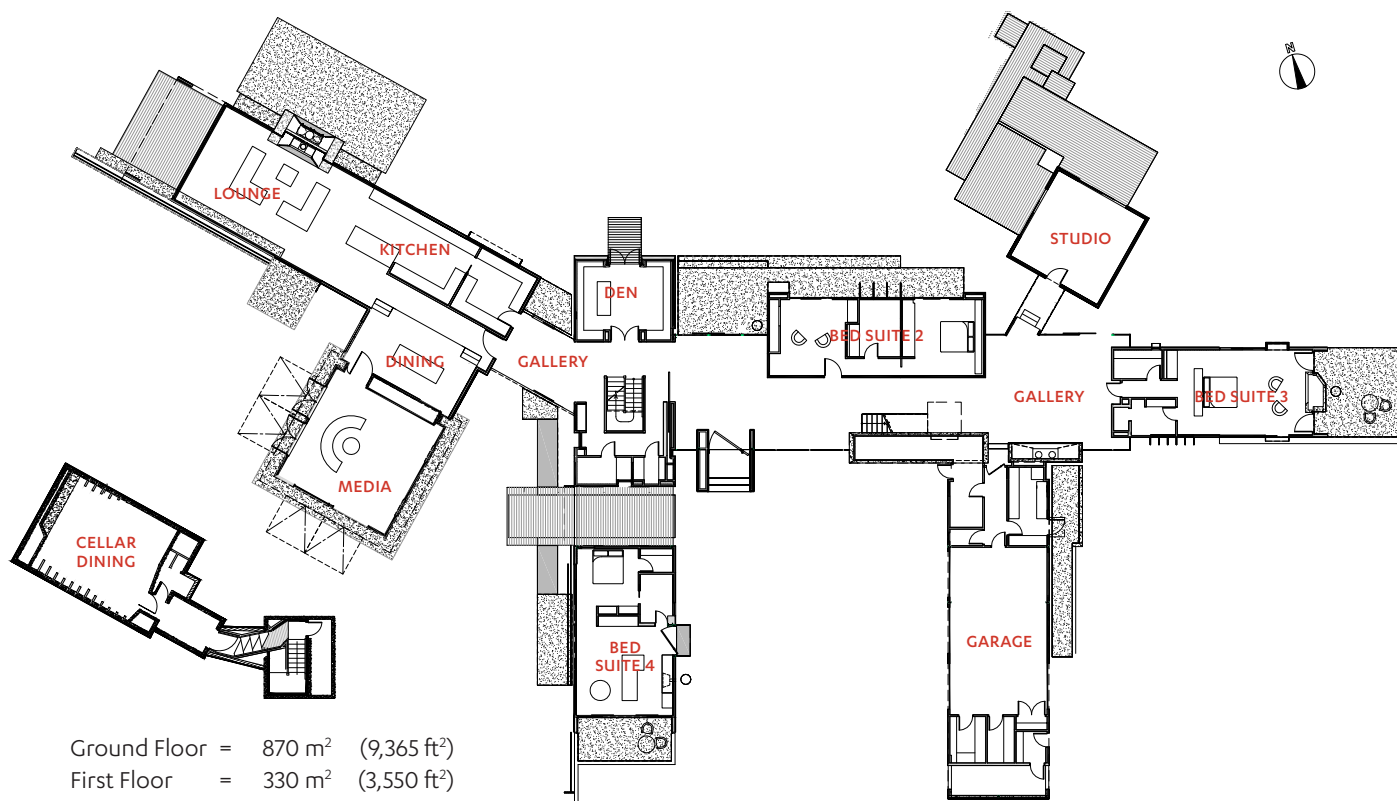


# Features

- Six suites, all with en-suite bathrooms & private sitting area
  - 4 x Super king bedrooms
  - 1 x Queen bedroom
  - 1 x Twin bedroom
- Open plan living space
- Music & media room
- Fireside gallery with grand piano
- Informal dining area
- Underground wine cellar & formal dining
- Den & bar
- Art studio
- Fully equipped kitchen
- Chef's kitchen
- Laundry
- Multiple indoor & outdoor fires
- Manicured garden with sculptures & pond
- Extensive outdoor entertaining space
- Championship sized lawn tennis court
- Heated infinity swimming pool
- Spa pool
- Sauna
- Petanque court
- Pizza oven
- Barbecue
- Parking







Ground Floor = 870 m<sup>2</sup> (9,365 ft<sup>2</sup>)  
 First Floor = 330 m<sup>2</sup> (3,550 ft<sup>2</sup>)  
 Cellar = 100 m<sup>2</sup> (1,075 ft<sup>2</sup>)  
**Total = 1,300 m<sup>2</sup> (13,990 ft<sup>2</sup>)**



# lodge

AT THE HILLS

McDonnell Road  
Arrowtown, New Zealand  
[lodge@thehills.co.nz](mailto:lodge@thehills.co.nz)  
+64 3 450 0855

